

Springhead

a rural centre for creative and sustainable living

Spring Times No. 6

The Springhead Trust Ltd.
Fontmell Magna
Dorset SP7 0NU
Tel/Fax: 01747 811853

info@springheadtrust.org.uk
www.springheadtrust.org.uk

A RESIDENTIAL IS A GREAT WAY TO BOND WITH YOUR CLASS AT THE BEGINNING OF THE NEW SCHOOL YEAR

A new school year is always an unsettling time for both teachers and pupils: a time of fresh beginnings when new relationships have to be built. What better way to integrate your new team than to organise a school residential trip. It helps to develop team bonding, confidence, self-esteem, new friendships and most of all, gives young people the chance to broaden their experiences.

Our residential centre, set in North Dorset's stunning countryside, is an excellent place for an autumn school trip; it's perfect for a sleep-over or a longer stay, where pupils have the opportunity to benefit from out-of-classroom learning at arguably the most colourful season of the year and connect with nature.

To help you plan your school trip, to ensure appropriate health and safety measures are in place and that the children gain as much from the experience as possible, the Springhead Trust is currently producing a teachers' pack containing a raft of information, including a site risk assessment, a programme of suggested activities and a recommended list of clothes/items for the pupils to pack.

Our rates are: 15 March – 15 October (2009) **£29.75** fully catered or **£20** self-catered; 16 October (2009 – 14 March (2010) **£27.56** fully catered or **£18** self catered. (Prices quoted are per pupil per night and **do not** include VAT).



TWO THOUGHT-PROVOKING CREATIVE COURSES FOR ABLE, GIFTED AND TALENTED YOUNG PEOPLE

Colin Macfarlane, the very popular writer, performing poet, riddler, creative writing tutor and educational consultant, is running two courses for able, gifted and talented (AG&T) pupils at Springhead in the forthcoming months. Colin, who specialises in working with AG&T students, has developed a one-day poetry course called 'Rhyme Time' for years 2 and 3, which will be run on Thursday 2nd April at a cost of **£48** per student (children are asked to bring their own packed lunch) and a creative English course called *Wild Writing*, a residential fully-catered course for years 5, 6 and 7 held from 7th to 9th July at a cost of **£145** per pupil. (Prices quoted are **inclusive** of VAT).

Leaflets on both courses are available for school distribution and can be downloaded from Springhead's web site www.springheadtrust.org.uk or requested through Springhead's office on **01747 811853**.

As all Colin's courses are highly popular, early booking is advisable.



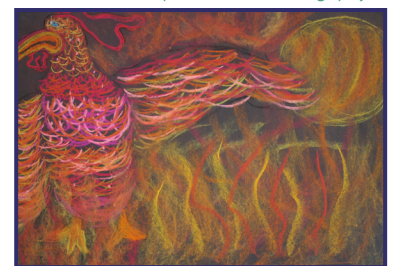
ONCE UPON A TIME

Last year, our development officer, Suzette Griffiths, applied for funding from the Arts Council to run a cross-curriculum arts/literacy project for children aged between **6 – 11** years named 'Mysterious, Magical, Mischievous and Magnificent'. Based on Springhead's two previously successful projects *Walking in the Footsteps of Our Ancestors* and *Our Global Village*, our centre was going to appoint 6 professional artists to individually run 3 workshops for children from 3 different schools, involving a total of **18 schools**. Inspired by the pupils' six chosen fiction books and Springhead's exceptional setting, each artist was to create a sequel to his/her given story, motivating the pupils to create pieces of **2D** or **3D storytelling imagery**. The project was to culminate in a weekend family arts festival with an exhibition of pupils' artwork and a programme of drop-in family art and performing workshops linked to popular children's stories, for example; performing magic (*Harry Potter* series by J. K. Rowling); willow work animal sculptures (*The Wind in the Willows* by Kenneth Grahame); and drum music (*Jungle Book* by Rudyard Kipling).

Although Suzette's proposal was recommended for funding in the Arts Council's application process, it was turned down at the final hurdle due to limited funds. Now renamed *Once Upon a Time*, Suzette is rewriting the proposal and is reapplying to the Arts Council for funding, a move which is being supported by DepArture (Dorset's arts education office).

However, Suzette would greatly appreciate your comments to strengthen the case in the proposal that an arts/literacy project would be highly beneficial to the children of Dorset and nearby Wiltshire. Please could you email her on SEJGriffiths@aol.com as to why it is so important that your pupils should be encouraged to read more!

Pastel drawing created by primary pupil who took part in the **Global Village** project



Springhead
a rural centre for creative and sustainable living
Registered Charity No. 1112083